

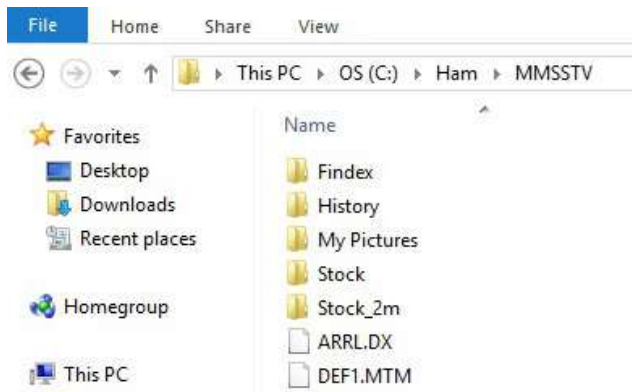
Efficient Picture Organization in MMSSTV

When I first began using MMSSTV, I would load all my images in the 'S. pix' area within MMSSTV. That worked for a while, but after I accumulated many pictures, I decided to organize my pictures thematically. In addition, I now use the pop-up picture viewer to display a thematic set.

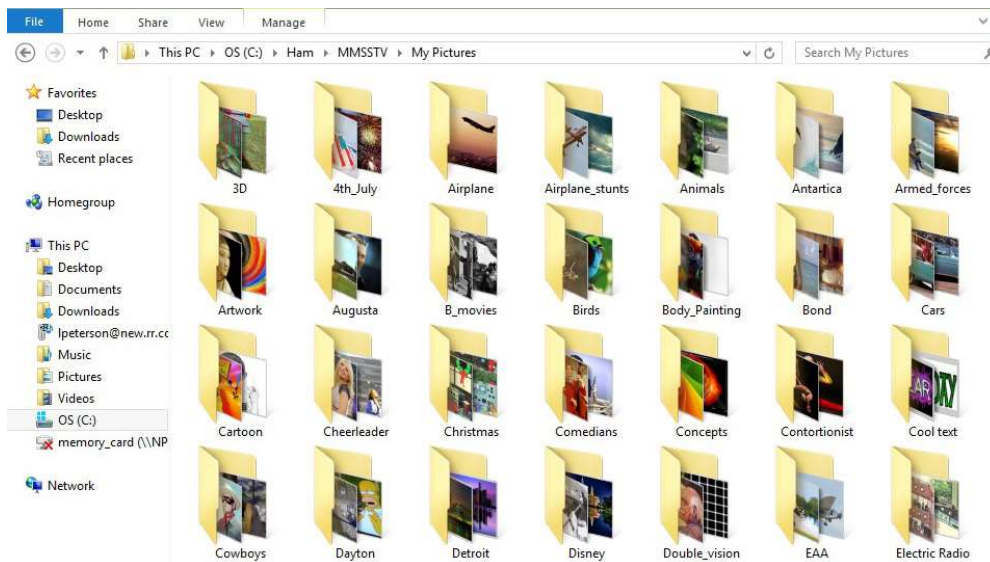
I have almost 100 thematic sets. I will illustrate the Augusta set in this tutorial. I will use this group of pictures in April during Masters week in Augusta, GA when this famous golf tournament is played.

Each of my thematic sets features some 20 to 60 pictures. I can blend a chosen picture very rapidly with a desired template and be ready to transmit when it comes my turn in the QSO. There is no more fumbling around in a very expansive 'S. pix' area to find the picture I want to use.

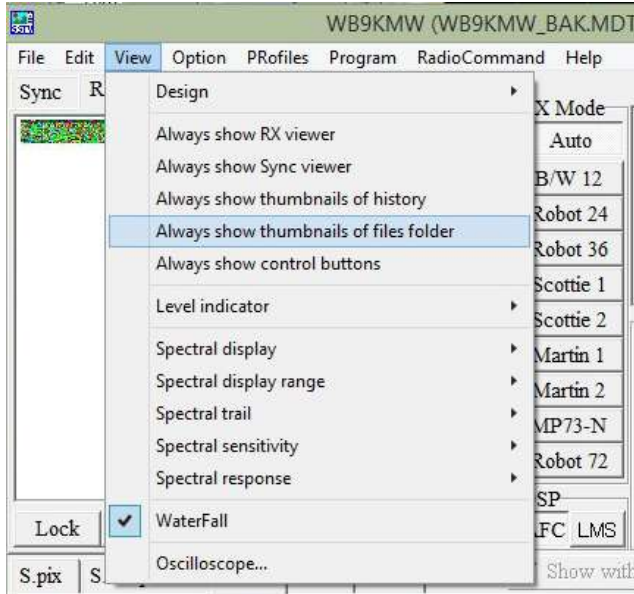
This tutorial explains my technique. First, I have created a special file sub-directory in the MMSSTV folder called 'My Pictures.'



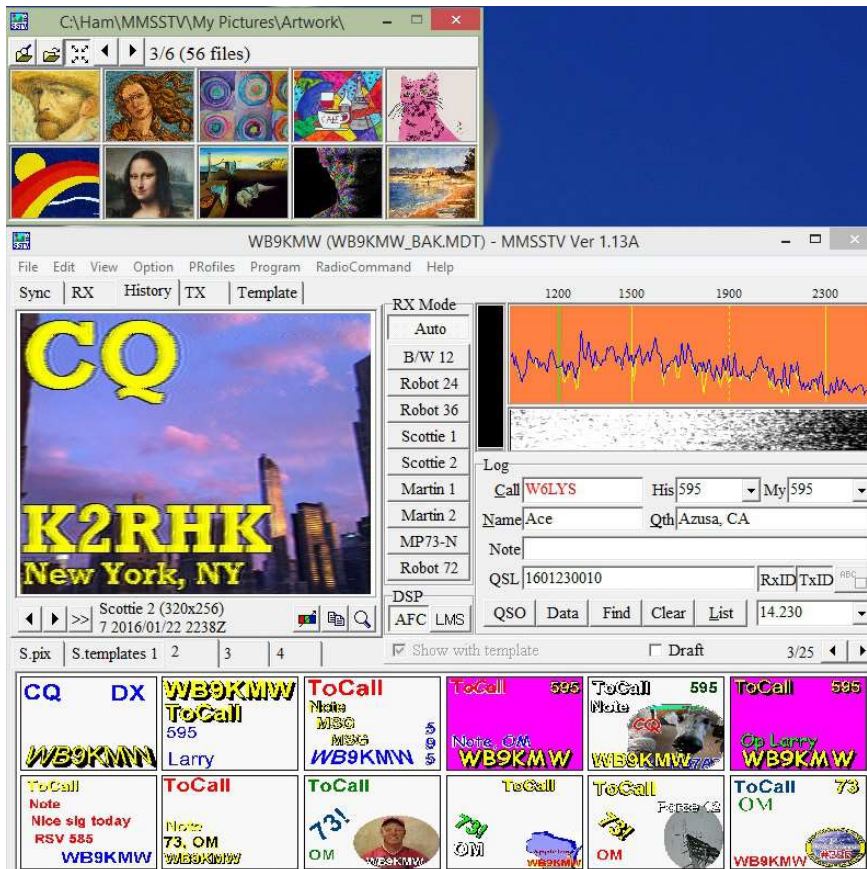
Then inside of that folder I create numerous sub-directories to store each picture theme. This is where all those JPG images cropped to 320x256 px reside.



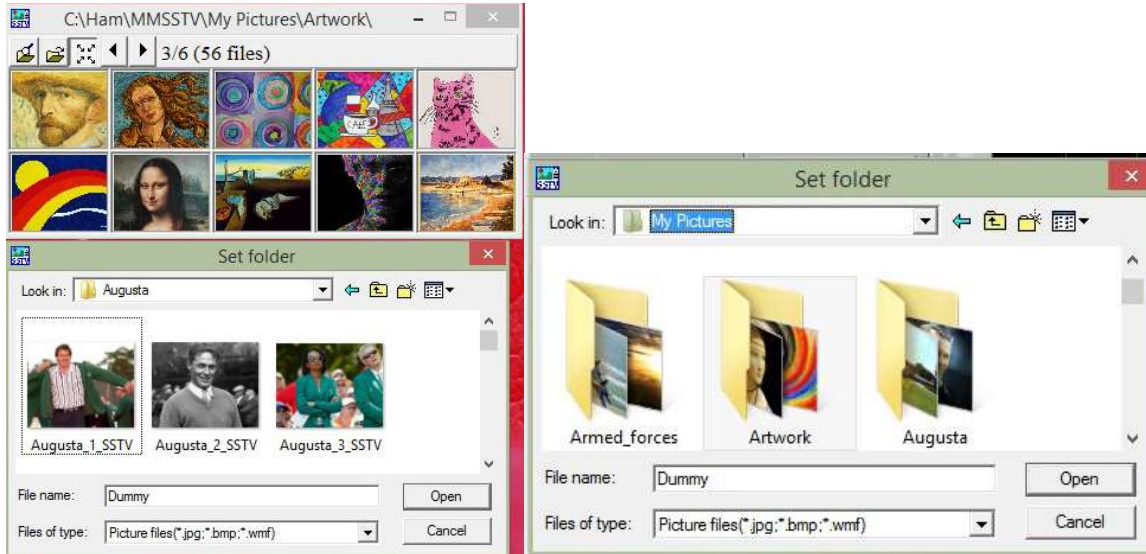
Back to MMSSTV, I then click on 'Always show thumbnails of files folder' in the View menu option.



This will launch a pop-up window. In this example of my 'Artwork' collection, I have 56 stored pictures for instant access.



When we get to Master's week I will click on the folder-magnifying glass icon in the upper left corner. This will launch another pop up window. That takes me to that 'My Pictures' sub-directory. In this example, once I have selected the 'Augusta' set, I simply click on the Open button. This will replace the 'Artwork' set with the 'Augusta' set of pictures.



Now I am all ready to choose a template and click on an image to merge with that template. I'm all set for transmission.



Larry WB9KMW @ www.wb9kmw.com