

Creating an SSTV Mosaic Template

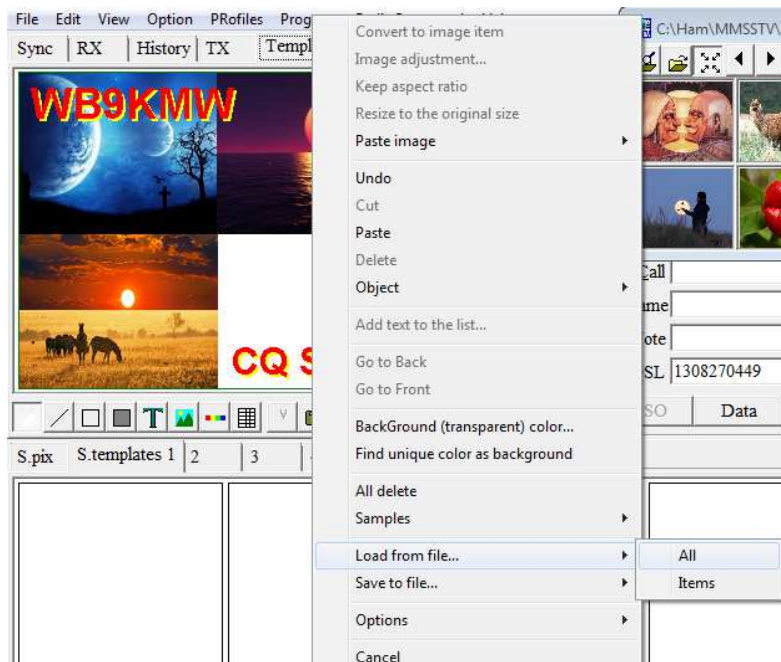
Here is a creative way to produce a template in MMSSTV that displays a mosaic of your favorite images. Before you dig in, you will want to study how to add an image or picture. See the *Adding an Image or Picture into the MMSSTV Template* tutorial.

First, create your base template with text.

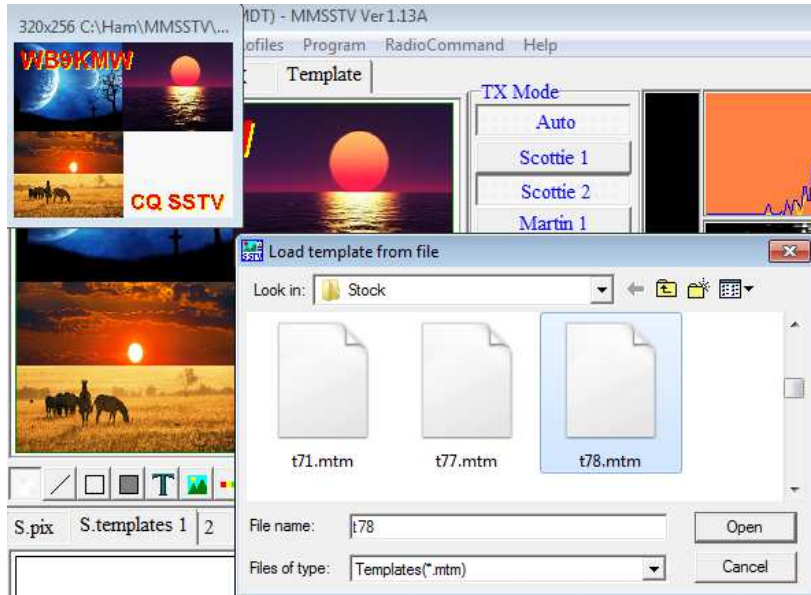
Then for my specific four-picture mosaic, install the first three pictures. This is important so that you can initially drag & drop this work into one of the template storage panes along the bottom of MMSSTV.



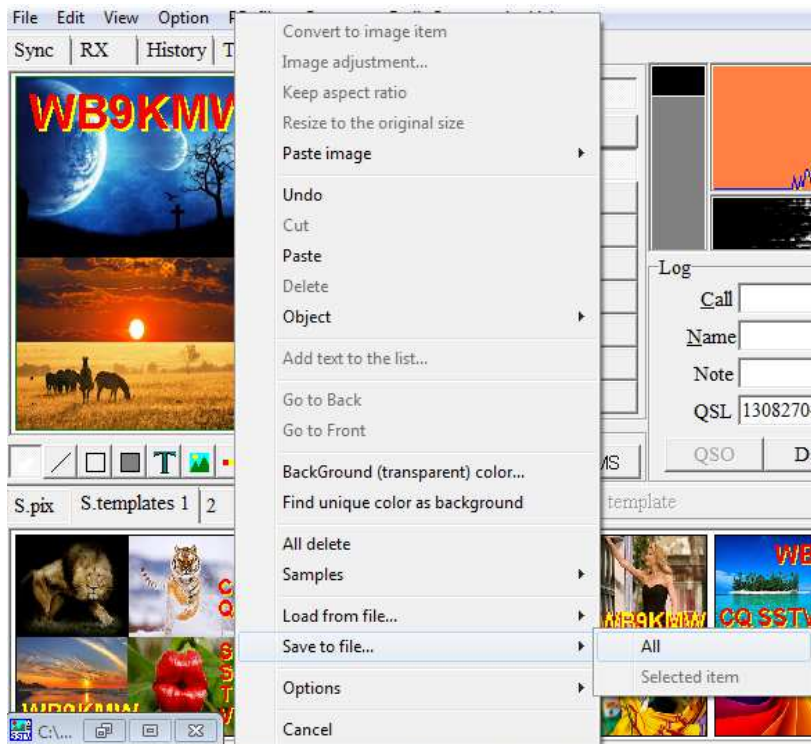
Now you need to find where that is stored in your MMSSTV file directory. You do this by a right mouse click on Load from file>All



You will need to search through several possible templates until you find the one you are working on. When you do, jot it down for reference, ie, t78.mtm



Finally, load your last picture into the mosaic and then right click again, and this time select Save to file>All



Finish by finding that template, and clicking on Save. You need to do it this way because you cannot effectively grab the edge of the completed work immediately and drag it into a template storage pane. All you'll end up doing is unintentionally selecting an image or text, and inappropriately resizing it.

