

### Adding an Image or Picture into the MMSSTV Template

You can be quite creative with MMSSTV templates. For example, an image insert can be included with the text and then saved as a new template. Let's see how that is done.

First, you need to have the desired image added to the 'S. pix' collection. For this example, I added the World Slow Scan TV Club logo. Normally, I add JPG images sized 320x256 pixels. Here the given image is 256x256 pixels, so one needs to stretch the image to provide a good full-screen presentation in MMSSTV.



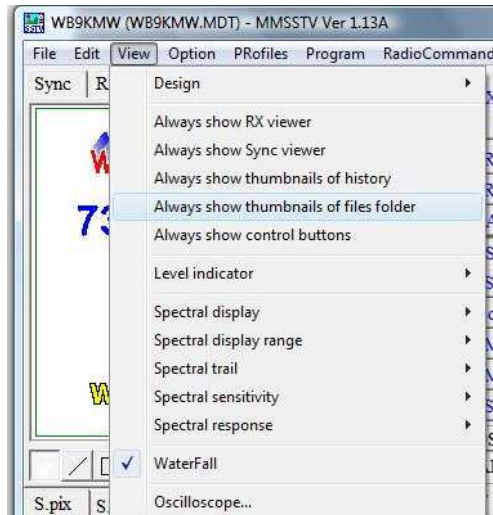
### Create the basic template

Before inserting this new image within the template, create a preliminary 73's template, for example.

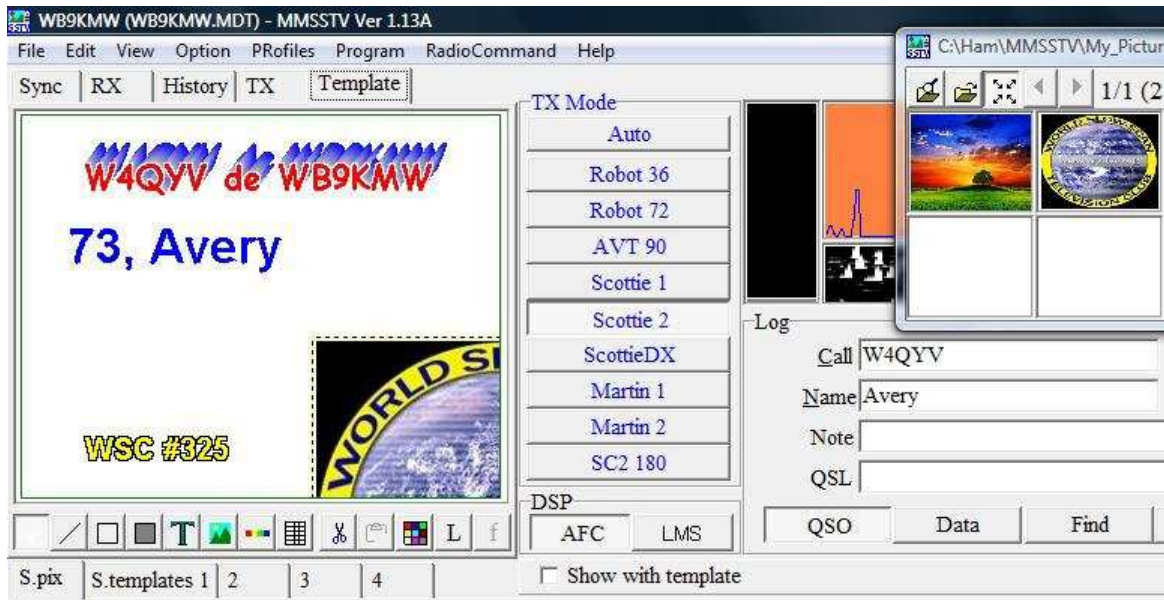


### Insert the desired image

In order to facilitate this insertion, one first needs to select View>Always show thumbnails of files folders. (Hint: I ALWAYS have this window open to show all my SSTV images. This makes it very easy to carry on QSOs. I like to size as a 2 row, 6 column grid and place over the waterfall right above the log.)



Now one simply places the mouse cursor over the desired image and drags it onto the edge of the template pane.



The final steps are simply to size the image, locate it in the template, as desired, and then save that template permanently in the 'S. templates' section of MMSSTV.



When you are ready to transmit, select a suitable background image from your thumbnail collection to merge with this new template and push TX!!

