

Using SSTV Cams for Propagation and Relay Purposes

A few ham stations around the world routinely receive SSTV transmissions, most typically on 14.230 MHz, and then immediately port that information to their web site servers. Often these hams make use of a handy piece of software created by John KE5RS, called the KE5RS FTP Widget. We all thank him for this excellent piece of enabling software!

Hams then take those pictures and within a few seconds will display them on their web site. Those pictures are referred to as 'SSTV cams.' Here is an example of a recent image received by KE5RS.

KE5RS Live SSTV Cam Live SSTV Images from Leander, Texas



Autoslant correction is now ON



Hear Live Audio! Allow about a 10 second delay to buffer

SSTV or Slow Scan Television is a method or mode where ham radio operators from all over the world send and receive still images through the airways. The images seen here have been sent by ham radio operators all over the world. The images are immediately posted to this web page after they are received.

A very, very limited number of hams go a huge step further. They collect SSTV cam information from reporting stations and place those images onto one web page for viewing.

You can use this information to your advantage in two particular ways:

1. **Propagation:** You can view how well your station is received across North America by a variety of SSTV cams. You will know immediately how good 20 meter band conditions are. You will know which areas are receiving your transmission and where you have no reception at that given hour.
2. **Station Relay:** When you are in the midst of an SSTV QSO, all sorts of things happen, such as QSB, QRM and sometimes QRN. All interfere with your ability to receive the latest transmission. You may have a very difficult time reading the ham's call sign or other pertinent information delivered in the template. Pictures can be difficult to make out, too. By using these SSTV cams as 'relay stations' to supplement your station's reception, you will be able to have a richer QSO.

I have found a few web sites around the world which collect a wide variety of SSTV cams and display them on their web page. Following is a survey of what I have discovered so far. All information provided here pertains only to North American SSTV cams. There are other web sites which display transmissions received by ham stations in Europe, Australia and elsewhere.

One caveat: Most of the following web sites have 'dead' SSTV cams. That is, some of the images are a year or more old, and the station is no longer routinely posting new SSTV images.

That particular clutter is removed from my WB9KMW SSTV cam collection. I have stations in North America geographically organized. West coast stations are on the left: moving across the US until you find a lone station on the eastern seaboard in Florida. Unfortunately, I cannot find any active SSTV cams along the eastern coast! Also, northern-most stations are near the top of my page.

A very unique feature of the WB9KMW cam collection is the ability to hover one's mouse cursor above any image. It will immediately expand to for a much larger, often clearer view of the transmission. And you do that without the inconvenience of leaving my SSTV 20M web page.

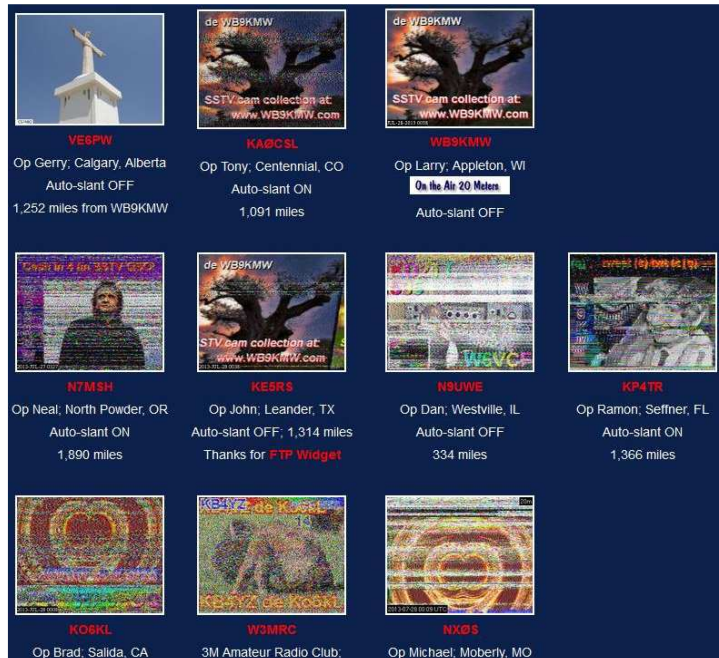
The screenshot shows a dark blue background with several SSTV images and their corresponding call signs and operator information:

- K06KL**: Op Brad; Salida, CA; Auto-slant OFF; 2,179 miles; See nights on 40 & 75 M
- W3MRC**: 3M Amateur Radio Club; Austin, TX; 1,331 miles; Auto-slant OFF
- NX0's**: Op Michael; Moberly, MO; Auto-slant OFF; 393 miles
- W6VCF**: Rig: IC-7700; BTU OM; KD2TT (2013-JUL-27 22:58)
- K6HR**: Op Paul; Norwalk, CA; Auto-slant ON; 1,730 miles
- K5TED**: Op Ted; San Antonio, TX; Auto-slant OFF; 1,164 miles
- W6KI**: Op Steve; Eureka Springs, AR; Auto-slant OFF; 611 miles
- QRZ W2PTH**

So let me share several good web sites which feature a collection of North American SSTV cams. I have referenced many of these web sites near the bottom of my SSTV 20M web page, so you can just click on a hyperlink to launch their web page.

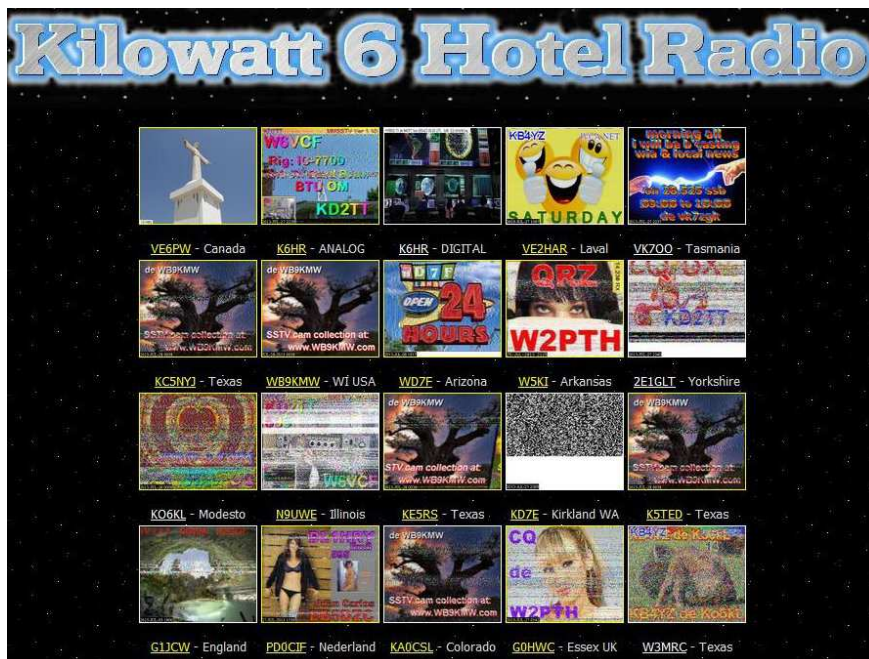
WB9KMW collection

These SSTV cams are found within the SSTV 20M tab at www.WB9KMW.com Here is a sample of them.



K6HR collection

Click on Paul's K6HR link under his SSTV cam image on my web site. That takes you to the main SSTV page for K6HR. Then click on his link to view a collection of worldwide SSTV cams.



World SSTV collection

This is probably the leading reference source of SSTV cams for hams. It is a broad collection of live & dead cams from North American and around the globe. Scroll towards the bottom half of my SSTV 20M web site and you will find a link to www.worldsstv.com



VE6SLP
Edmonton, Ab, Ca



VE6PW
Calgary, Alberta, Ca



VE2HAR
Laval, Qc, Canada



K6HR
Norwalk, Ca



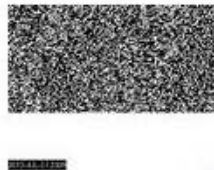
K7LLOL
Phoenix, Az



KO6KL
San Joaquin, Ca



KK0M
Livermore, Ca



KD7E
Kirkland, Wa



KJ7YL
Snohomish, WA.



WD7F
Tucson, Arizona



KE5RS
Leander, Tx



K5TED
San Antonio, Tx



W3MRC
Austin, Tx



KA0CSL
Centennial, Colorado



K6AFW
Oak Grove, Minnesota



WA0EBZ
Osakis, Mn



NP4AI
Lone Tree, Co



NP4AI-DIG
Lone Tree Co Dm79nn



W5KI
Eureka Springs, Ar



KA0UNB
Omaha Ne. 20 Meters



KA6NEI
Wisconsin, Usa



N0WYO
Kearney, Ne



KY4US
Lexington, Ky



KE5YA
Corsicana, Texas USA



WB9KMW
Appleton, Wi



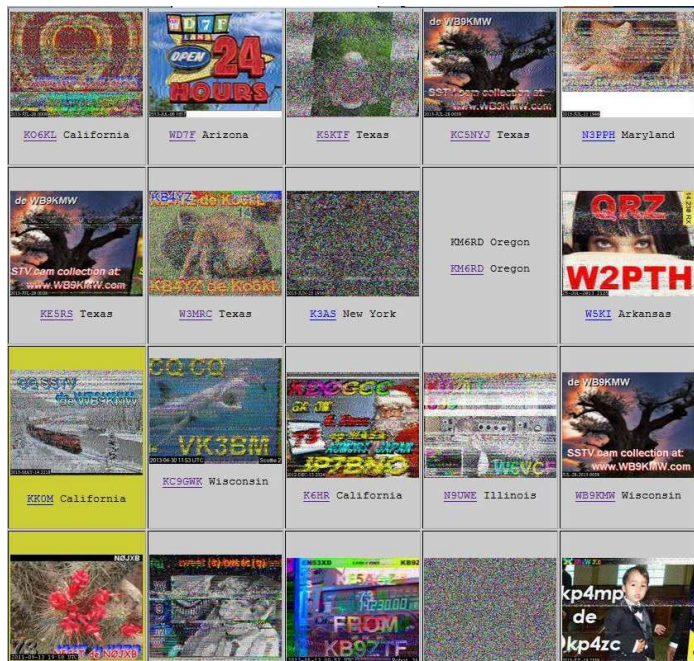
GØHWC collection

A nice roundup of North American SSTV cams is displayed on Paul's GØHWC web site. You can find a link to his web page toward the bottom half of my SSTV 20M page.



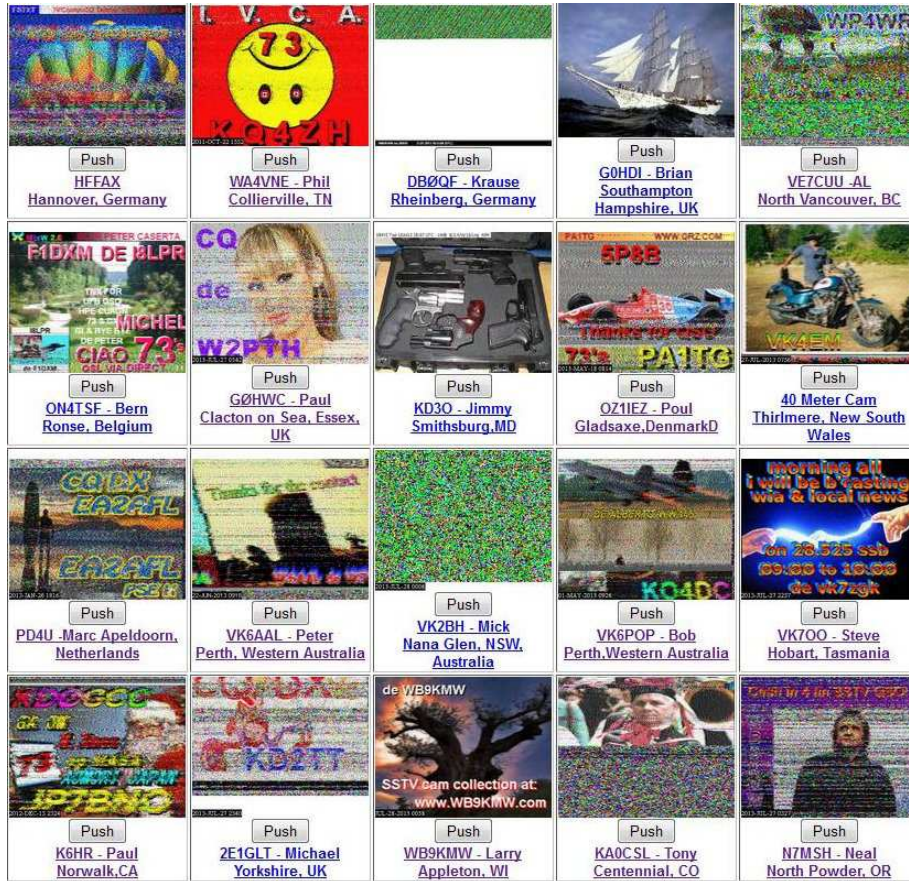
CX2ABP collection

Rod CX2ABP has a collection of SSTV cams, too. Again, scroll to the second half of my web site and click on the hyperlink to escort you to his page.



WD7F collection

Visit John WD7F's web site at www.wd7f.com/sstv and you will find a collection of SSTV cams at the bottom of this web page.



Looking ahead

I have but one remaining goal for the SSTV cam collection at www.WB9KMW.com

I would love to find 2 or 3 more stations along the eastern seaboard to add on right hand side of my collection. Hams from Maine to Georgia just don't deliver SSTV cams. The few I have found are long dead.

Coverage for the balance of North America is pretty good.

73,

Larry WB9KMW